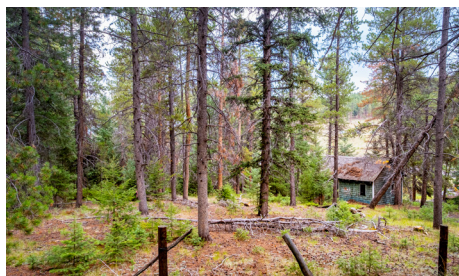
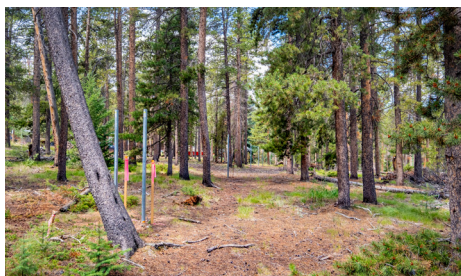


RED WING PARK

Land For Sale



26764 R LANE
Conifer, CO 80433

REDEVELOPMENT OPPORTUNITY

PROPERTY HIGHLIGHTS

- PRIME INVESTMENT OPPORTUNITY
- ZONED MR-3
- 3 PARCELS, 2.02 ACRES
- ADJACENT PROPERTY COULD BE AVAILABLE
- IDEAL LOCATION FOR MULTIPLE UNITS
- NEAR NEIGHBORHOOD SERVICES - RETAIL, RESTAURANTS, MEDICAL, SERVICES

PROPERTY DESCRIPTION

Beautiful lots situated near neighborhood services including restaurants, medical and dental.

Close to Hwy 73, with visibility and easy access to Hwy 285 for quick trips into the Metro area.

These lots would be ideal for a residential redevelopment in an underserved area.

Madison Commercial Properties, LTD.
501 S. Cherry Street, Suite 350, Denver, CO 80246
720.441.1460 | www.madisoncommercial.com



AERIAL MAP



DISTANCE TO:

Downtown Denver	32 Miles
Lakewood	23 Miles
Golden	24 Miles
Evergreen	9 Miles

TAX ID 61-231-99-002 TAX ID 61-232-01-003 TAX ID 61-232-01-005

ASKING PRICE \$649,000

If you are interested in this property and would like to learn more, contact:



JESSICA SMITH

Commercial Advisor
720-320-6225

jsmith@madisoncommercial.com



MARIE LYNCH

Residential Advisor
303-250-3133

marie@madisonprops.com



This document has been prepared by Madison Commercial Properties for advertising purposes only. The information contained herein has been obtained from sources we deem reliable. While we have no reason to doubt its accuracy, no warranty or representation is made of the foregoing information. Terms of sale and availability are subject to change or withdrawal without notice.