

COLORADO CLUB



4155 E JEWELL AVE
Denver, CO 80222

FOR A VIRTUAL TOUR VISIT:

<https://kuula.co/post/71qyb/collection/71BDI>

PROPERTY HIGHLIGHTS

- CUSTOM DESIGNED SUITES
- BEAUTIFUL VIEWS
- BALCONIES
- FIREPLACES
- HEALTH CLUB
- 5-STAR CAFÉ
- 3 CONFERENCE ROOMS
- SECURITY GUARD

PROPERTY DESCRIPTION

At an asking rate of \$22.00/SF, suites are available from 466 SF and larger. Quick move-ins available. Three-year leases are typical. Central location with easy access at I-25 and Colorado Boulevard. This is a fantastic opportunity for any business owner!

Madison Commercial Properties, LTD.
501 S. Cherry Street, Suite 350, Denver, CO 80246
720.441.1460 | www.madisoncommercial.com



AERIAL MAP

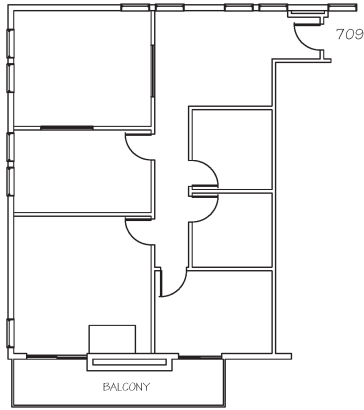


ADDITIONAL PHOTOS

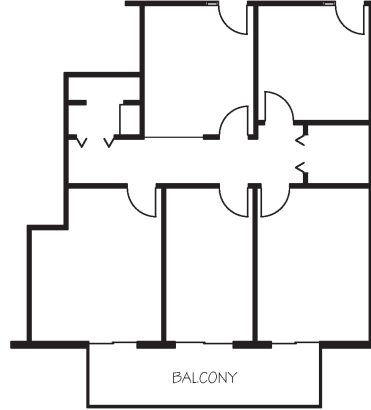


CURRENT OFFERINGS

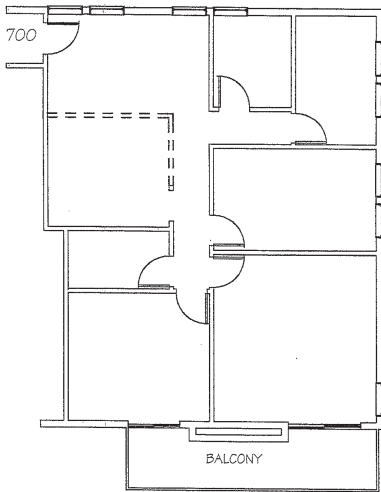
Contact Broker for additional Suite options!



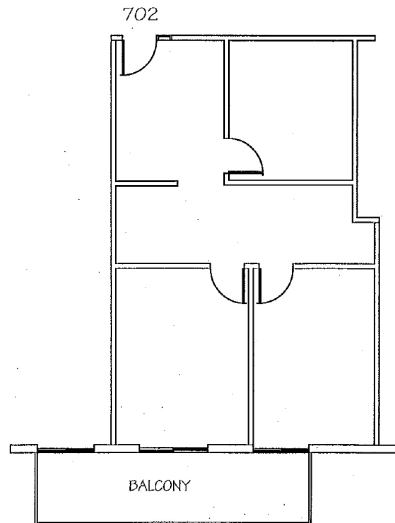
Suite 709 | 1400 SF



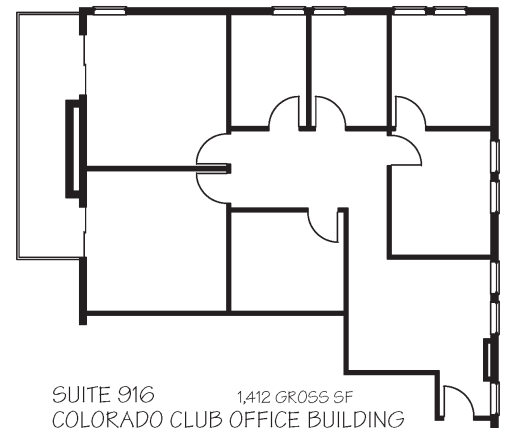
Suite 714 | 1240 SF



Suite 700 | 1386 SF



Suite 702 | 867 SF



Suite 916 | 1412 SF



If you have any further questions or would like to learn more, **please contact me today!**

Jessica Smith

Broker Associate

(m) 720-320-6225

(o) 720-441-1460

jsmith@madisoncommercial.com

