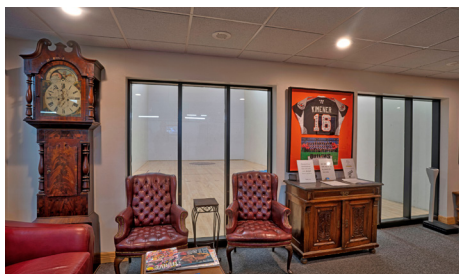


# COLORADO CLUB



**4155 E JEWELL AVE**  
Denver, CO 80222

**FOR A VIRTUAL TOUR VISIT:**

<https://kuula.co/post/71qyb/collection/7IBDI>

## PROPERTY HIGHLIGHTS

- CUSTOM DESIGNED SUITES
- BEAUTIFUL VIEWS
- BALCONIES
- FIREPLACES
- HEALTH CLUB
- 5-STAR CAFÉ
- 3 CONFERENCE ROOMS
- SECURITY GUARD

## PROPERTY DESCRIPTION

At an asking rate of \$22.00/SF, suites are available from 466 SF and larger. Quick move-ins available. Three-year leases are typical. Central location with easy access at I-25 and Colorado Boulevard. This is a fantastic opportunity for any business owner!

Madison Commercial Properties, LTD.  
501 S. Cherry Street, Suite 350, Denver, CO 80246  
720.441.1460 | [www.madisoncommercial.com](http://www.madisoncommercial.com)





## AERIAL MAP



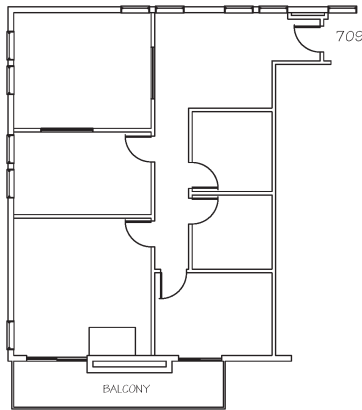
## ADDITIONAL PHOTOS



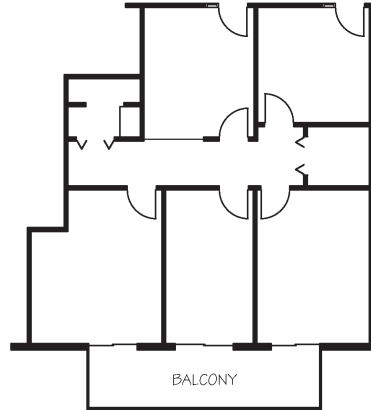


## CURRENT OFFERINGS

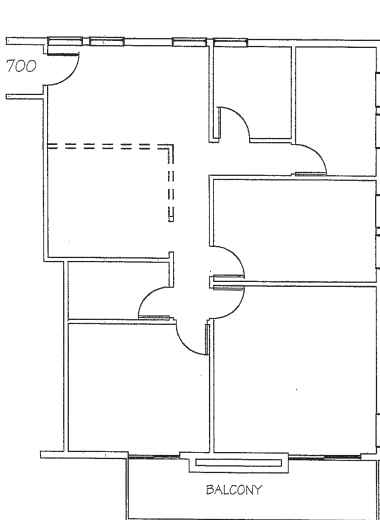
Contact Broker for additional Suite options!



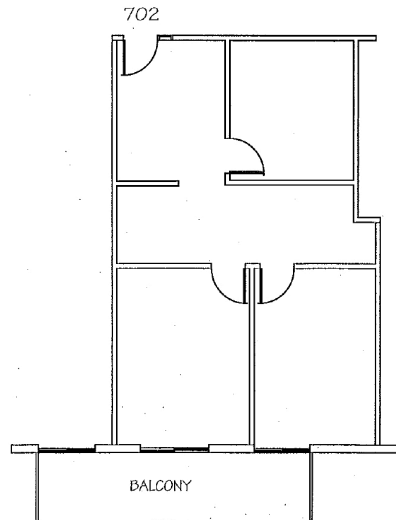
**Suite 709 | 1400 SF**



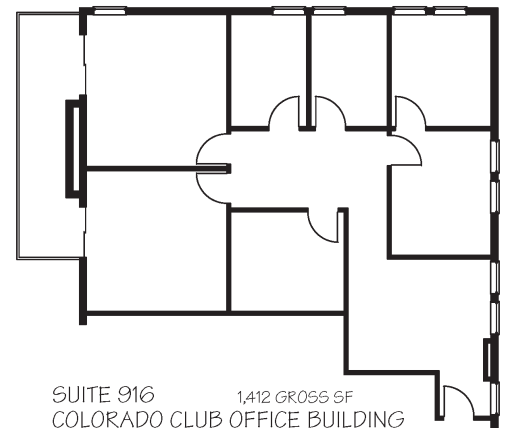
**Suite 714 | 1240 SF**



**Suite 700 | 1386 SF**



**Suite 702 | 867 SF**



**Suite 916 | 1412 SF**



If you have any further questions or would like to learn more, **please contact me today!**

**Jessica Smith**

*Broker Associate*

(m) 720-320-6225

(o) 720-441-1460

[jsmith@madisoncommercial.com](mailto:jsmith@madisoncommercial.com)



This document has been prepared by Madison Commercial Properties for advertising purposes only. The information contained herein has been obtained from sources we deem reliable. While we have no reason to doubt its accuracy, no warranty or representation is made of the foregoing information. Terms of sale and availability are subject to change or withdrawal without notice.